

*The*  
**STROKE**  
*Association*



**Stroke helpline**  
0845 3033 100

**Website**  
[www.stroke.org.uk](http://www.stroke.org.uk)

# Long-term conditions

- **Stroke - an emerging model of best practice**
- **Stroke survivors or carers in over half of the Personal Health Budget pilots**

**Stroke helpline**  
0845 3033 100

**Website**  
[www.stroke.org.uk](http://www.stroke.org.uk)



# Critical success factor

- **Overcoming complexity by bridging boundaries**
- **New Model provides a template**

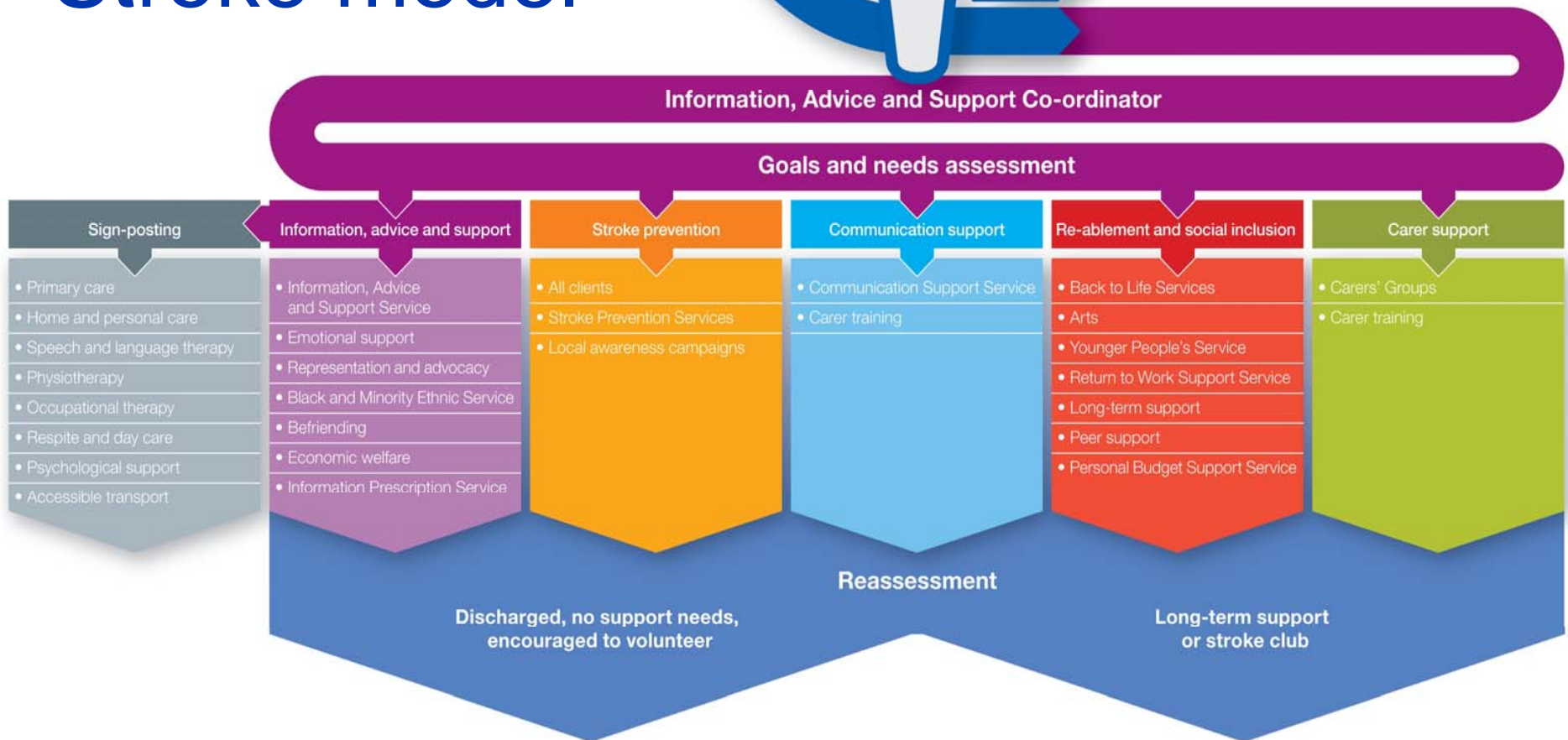
**Stroke helpline**  
0845 3033 100

**Website**  
[www.stroke.org.uk](http://www.stroke.org.uk)



# The Stroke Association's Life After Stroke model

**Life/After Stroke**



# Personal Budget Support

- **Key worker role evolving into Personal Budget Supporters**
- **Implications for Care Co-ordinator role**

**Stroke helpline**  
0845 3033 100

**Website**  
[www.stroke.org.uk](http://www.stroke.org.uk)



# Challenges and risk to individuals

- **Fault line of Health and social boundary**
- **Risk of widening inequity e.g. communication support**



**Stroke helpline**  
0845 3033 100

**Website**  
[www.stroke.org.uk](http://www.stroke.org.uk)

*The*  
**STROKE**  
Association

# Risk of increased confusion and inequity:

- Requirement to self fund or top-up
- Or
- Top-up causes ineligibility

**Stroke helpline**  
0845 3033 100

**Website**  
[www.stroke.org.uk](http://www.stroke.org.uk)



# Challenges and organisation risks:

- **Systems and administration**
- **Price**



**Stroke helpline**  
0845 3033 100

**Website**  
[www.stroke.org.uk](http://www.stroke.org.uk)

*The*  
**STROKE**  
Association



# Risk to the supply market

- **Smaller organisations withdraw?**
- **Need to support the sector and manage risk**

**Stroke helpline**  
0845 3033 100

**Website**  
[www.stroke.org.uk](http://www.stroke.org.uk)



# Unintended consequences and risk:

- **Voluntary sector finance depends on reciprocity**
- **Fundamental change of relationship**
- **Careful evaluation over the long-term**

**Stroke helpline**  
0845 3033 100

**Website**  
[www.stroke.org.uk](http://www.stroke.org.uk)



*The*  *Association*

**STROKE**

**Stroke helpline**  
0845 3033 100

**Website**  
[www.stroke.org.uk](http://www.stroke.org.uk)